

Brisbane City Temple



HOW TO BE BRAVE

26th August 2018

Welcome to worship

We believe that God has something to say to you today as we continue in our series on Philippians, today we focus on being anxious for nothing. We are glad that you are here to share with us and if you stay for the afternoon why not remain a bit longer and enjoy church with a difference? God's Sports Arena commences at 5:30pm and is always a time of encouragement and inspiration!

Can we help you? Prayer... a listening ear... want to get involved? Chat with us today or email or call during the week as we would love to help you in your journey of life and faith.

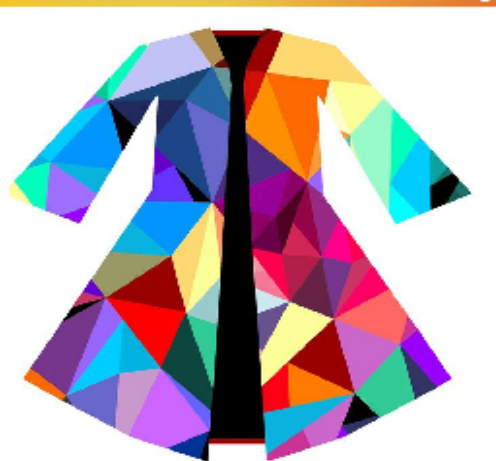
Fathers Day Morning Tea

2 September 9.45am

**Everyone is invited to
join us in the Social Hall**



2018 Women's Retreat Day



**FRACTURED...
FILLED...
FABULOUS!**



Saturday 15th September 9.30–4.00pm

A day designed for women with inspiring teaching, fun and encouragement from two amazing women.

Major Kim Hawke, Corps Officer, Campsie NSW and
Lucy Davis, Divisional Indigenous Engagement
Co-ordinator, South East Queensland.

An experience that could change the way you see yourself, your life, and others.

A great opportunity... invite a friend and Book Early!

Cost \$25 Uplifting worship, fabulous food and great fellowship

Bookings and payment essential before **Sunday 9th September** please

Phone:

07 3221 3461 (Office)

0438 556 432 (Susan)

Email registration to:

susan.young@aue.salvationarmy.org

pamela.brindley@aue.salvationarmy.org



Held at The Salvation Army Brisbane City Temple, 167 Ann Street, Brisbane – one block from Central Railway Station.

Limited disabled parking on request, and lift between floors available.

\$5 parking at Queens Plaza Car Park (validate parking ticket at event) also \$5 parking at King George Square Car Park

THE ADVENTURERS



An afternoon of

Brass and Barbershop

9th September 2:30 pm

Featuring Blindside, The Blenders Chorus & the BCT Band.

Admission Gold Coin Donation to the Salvation Army Drought Assistance Fund



There will be very limited parking Monday to Friday downstairs, please phone the Office if you are wanting a park the day before, as the number of tradespeople coming in have priority.



Your assistance is required to help repack the kitchen. This can be done most likely from Thursday afternoon, on Friday or Saturday. If you can assist please contact either Ron MacDonald or Major Vicki

Congratulations to Nat & Aaron on the on the birth of Cooper James Wemyss, perfect in every way!



Congratulations to the Great Grandparents— Cols Don & Bernice, Grandparents Judith & Stephen & the Aunties & Uncles



YOUNG ADULTS

FACTORY CHURCH | EVERY 2ND FRIDAY NIGHT | 7PM | 167 ANN STREET BRISBANE

TUESDAY NIGHTS | CONNECT GROUP 6:30PM



@FACTORY_YA



@FACTORY YOUNG ADULTS



St John's Cathedral is holding a **Car Boot Sale on Saturday, September 22, from 8—12.**

We are invited as a neighbouring Church to participate and raise funds for our activities. The cost is \$20, but after that all takings can go to your section, for this you receive two normal size parking spots.

You would have to supply your own tables and chairs, though in some places people just spread out a rug on the ground. Participants would need to arrive between 7 and 7:30 a.m., and be set up by 8 a.m.

For more information contact St John's Cathedral mentioning you are from BCT Salvos and let the Corps Office know.



FRI 5 OCT - SUN 7 OCT

Watson Park Convention Centre,
337 Old Gympie Road
Dakabin QLD 4503

Event for kids Grade 2 - 6 aged children and Junior Leaders 15-17 years old



For Your Comfort - A parents room is on the left of the foyer and bathrooms are downstairs one level. A lift is available for those not good on stairs with access through the main worship hall.

Brisbane City Temple Corps

167 Ann St Brisbane 4000

Majors Dean & Vicki Clarke

P: 3221 3461 GPO Box 379 Brisbane 4001

bctsalvos@gmail.com *Find us on Facebook*

www.salvos.org.au/brisbanecitytemple



Brisbane City Parking

Queens Plaza \$5.00

[bring ticket to BCT for validation]

Entry Edward St Height 2.2mtrs

King George Square Entries Roma &

Adelaide Street Hgt 1.93mtrs \$5 Sundays



In the EVENT of a FIRE proceed to the CLOSEST EXIT ASSEMBLE across the road from BCT in the forecourt of 180 Ann St / Do Not evacuate BCT Car Park / Do Not use the Lift.